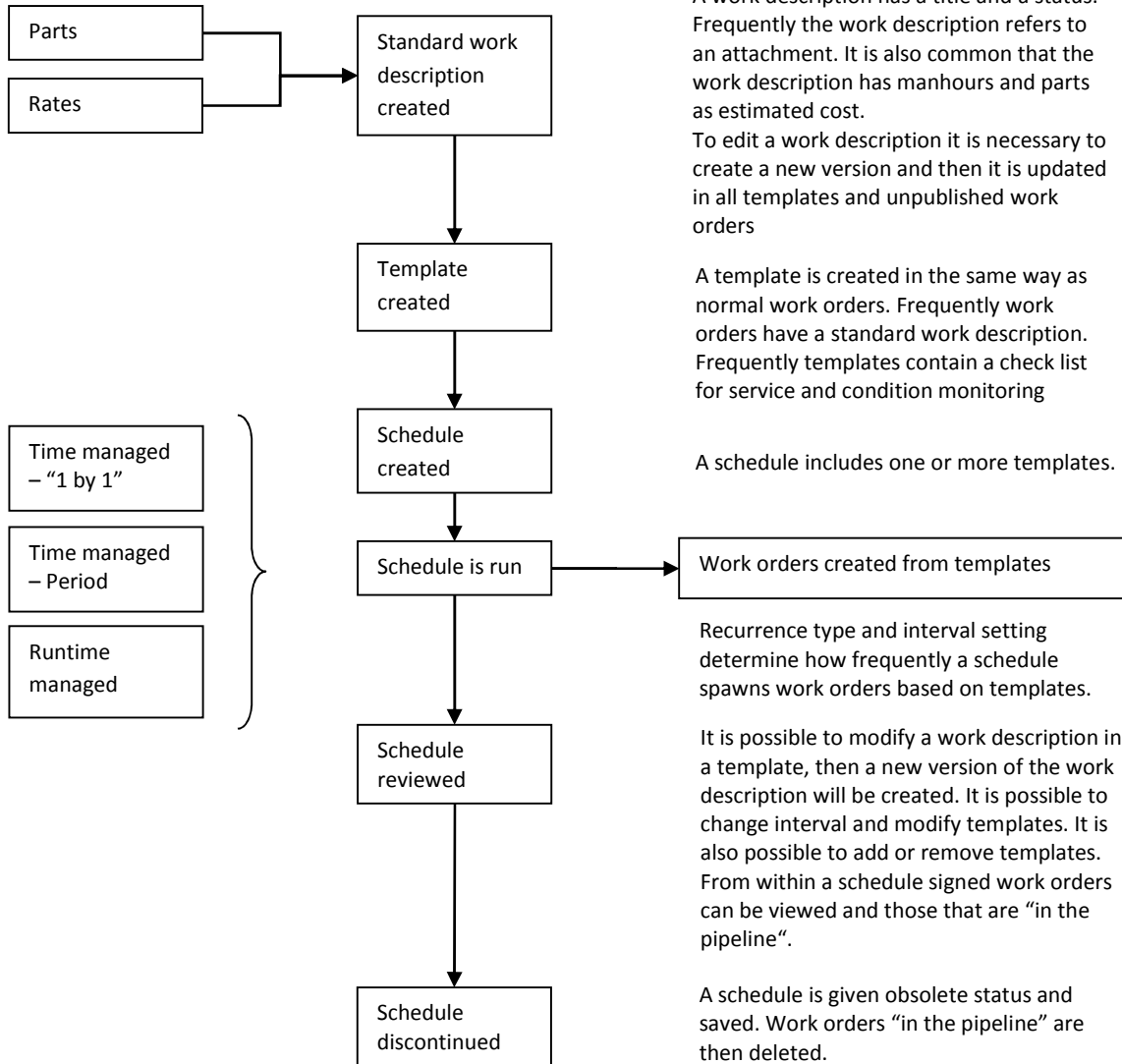


## DMM Schedules, templates and work descriptions

*A schedule is time managed or runtime managed*

*A schedule contains one or more templates, frequently with standard work descriptions and/or check lists*

*A schedule with templates, having standard work descriptions, include standard works that are routinely repeated (1)*



- (1) In companies that base monitoring and/or preventive maintenance on fixed tactics a large portion of work orders originates from schedules, even close to or above one-half.

