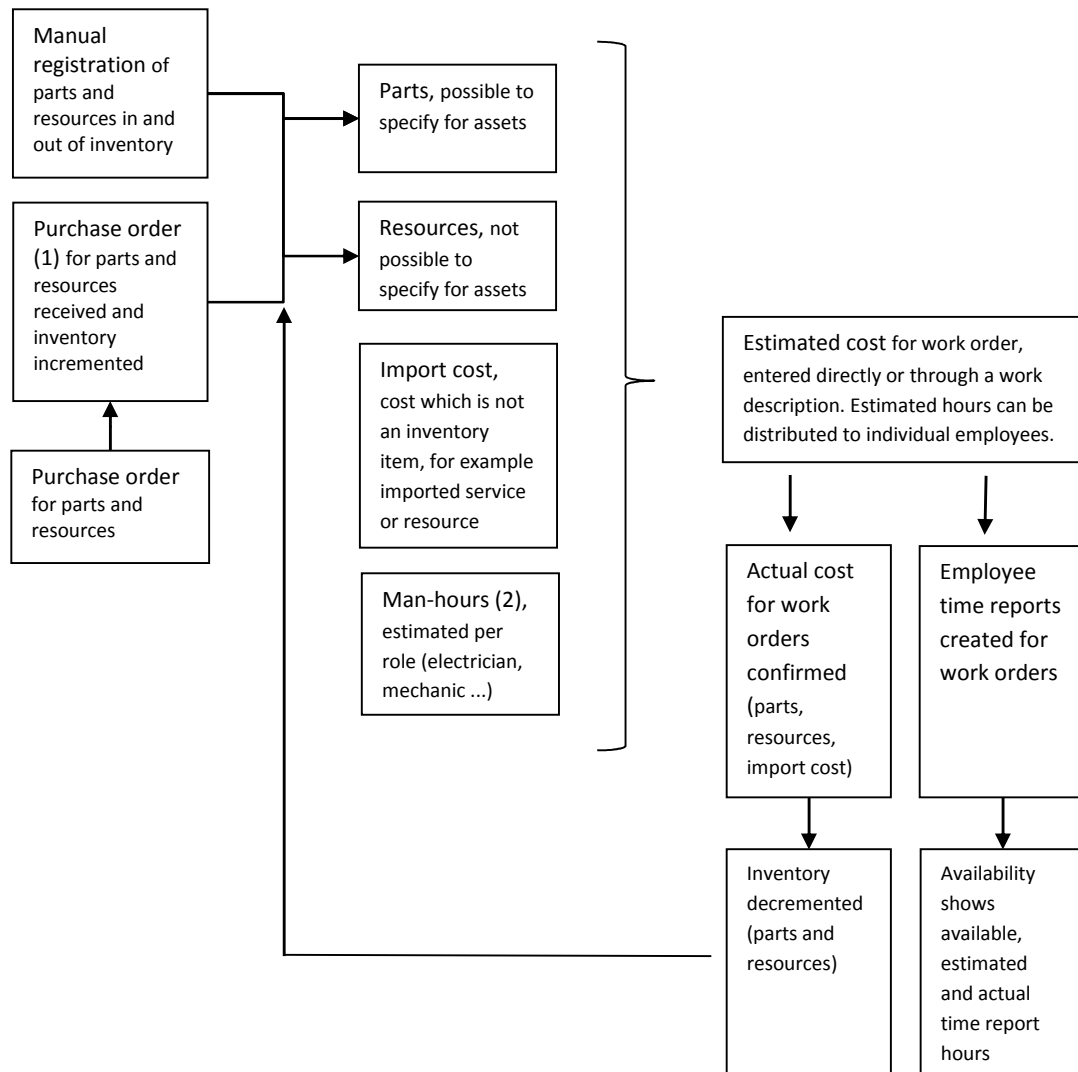


DMM Parts, resources, import cost and man-hours

For parts and resources inventory is kept

Parts, resources, import cost and man-hours can be entered as estimated cost for work orders

Estimated – and supplementary cost for work orders is confirmed as actual cost and employee time reports are entered



- (1) After a part has been created in the system (for example bearings) and a resource (for example detergent), then it is possible to create purchase orders in DMM. Each purchase order defines for example quantity of parts or resources that is ordered and from whom.
- (2) Man-hours, as estimated cost for work orders, are estimated per role.... a work order can for example contain an estimate for 10 hours from a mechanic and 10 hours from an electrician. When it is time to carry out work on a work order, then it is possible to distribute estimated hours to individual employees, for example John the mechanic and Smith the electrician. Administrator defines the set of roles

